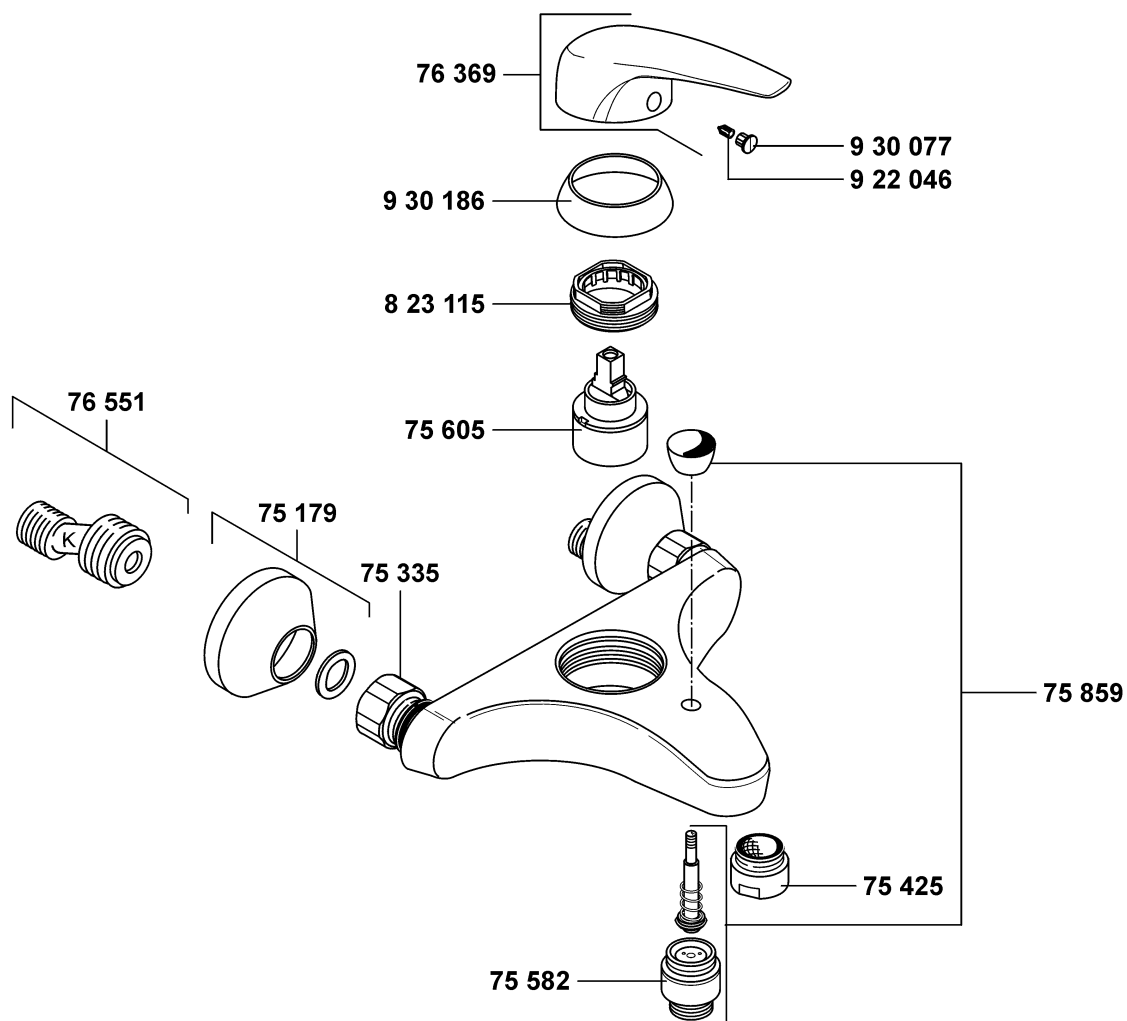


38681


ZA3868175

| 38681 | Wannenfüll- und Brause- Einhandmischer DN 15 | single lever bath- and shower mixer DN 15 | ééngreeps bad-/douchemengkraan 1/2" |
|---------|-------------------------------------------------|----------------------------------------------|-------------------------------------|
| 75 179 | Rosette | wall flange | rozet |
| 75 335 | Wandarmaturanschluss | wall-fitting connection | wandmengkraan aansluiting |
| 75 425 | Luftsprudler M 24 x 1/C | aerator M 24 x 1/C | perlator M 24 x 1/C |
| 75 582 | Brauseanschlussnippel | shower nipple | douche-aansluitnippel |
| 75 605 | Kartusche | cartridge | cartouche |
| 75 859 | autom. Umstellung KLUDI LOGO MIX | automatic diverter KLUDI LOGO MIX | autom. omstelling KLUDI LOGO MIX |
| 76 369 | Hebel, KLUDI LOGO MIX | lever for KLUDI LOGO MIX | greep voor KLUDI LOGO MIX |
| 76 551 | S-Anschluss mit Schalldämpfer | S-connection with sound absorber | S-koppeling met geluiddemper |
| 823 115 | Spannschraube | screw | spanschroef |
| 922 046 | Gewindestift | threading lathe | inbus schroef |
| 930 077 | Markierungsstopfen | red/blue insert | markeringsstop |
| 930 186 | Abdeckkappe | cover cap | afdekkap |